



# COMPANY PROFILE

# COMPANY OVERVIEW

---

Cosmic Rays was founded in 2013 with complete internal investment to deliver high-end engineering solutions. Our services include the supply and maintenance of specialized tools for mining and beneficiation plants, servicing and lubricating machines, and providing wear parts and oil and lubrication equipment. We are committed to introducing world-renowned mining and industrial service products to the Mongolian market while ensuring their availability and support.

## VISION

---

To be the leading Mongolian manufacturer, recognized for innovation, quality, and sustainable solutions, with a strong presence in international markets.

## MISSION

---

We are dedicated to providing secure, high-quality products, while fostering the economic and social growth of our country through responsible business practices and continuous innovation



# OUR SERVICES

---



- ▶ 01. CONSULTING SERVICE
- ▶ 02. ENGINEERING
- ▶ 03. PROJECT MANAGEMENT
- ▶ 04. SUPPLY CHAIN
- ▶ 05. MAINTNENCE
- ▶ 06. EQUIPMENT INSTALLMENT
- ▶ 07. AFTER SALES CARE





# OUR EXCLUSIVE BRANDS



SCORPION JACKS  
  
SAFETY. RELIABILITY. MANOUVREBILITY.

**MOSA**



**GENERAC** | MOBILE

**FOGMAKER**  
INTERNATIONAL AB



**FLOMAX**  
INTERNATIONAL

**COSMIC**  
RAYS ENGINEERING



AIRWORKS  
COMPRESSORS CORP

**LINCOLN**  
INDUSTRIAL

**ROTAIR**



**STUART**  
GROUP LTD

**Atlas Copco**

**MESDA**

# LUBRICATION EQUIPMENTS

**SAMOA** manufactures a full range of lubrication equipment to pump, dispense, measure, monitor, control and recovery lubricants and other type of service fluids in lubrication and vehicle maintenance applications.



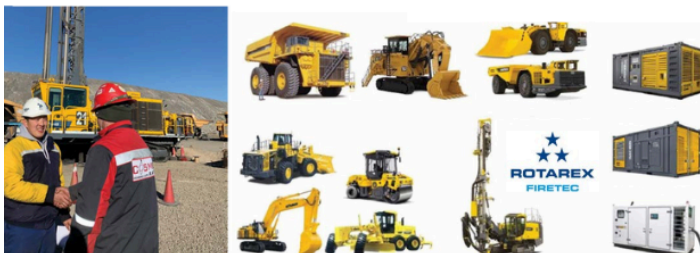
# AUTOMATIC FIRE DETECTION SYSTEM

**COMPACT LINE**

**FIREDETEC**



Our company has been installing fire protection systems from the Luxembourg-based brand **Rotarex** on major mining and road construction equipments in Mongolia

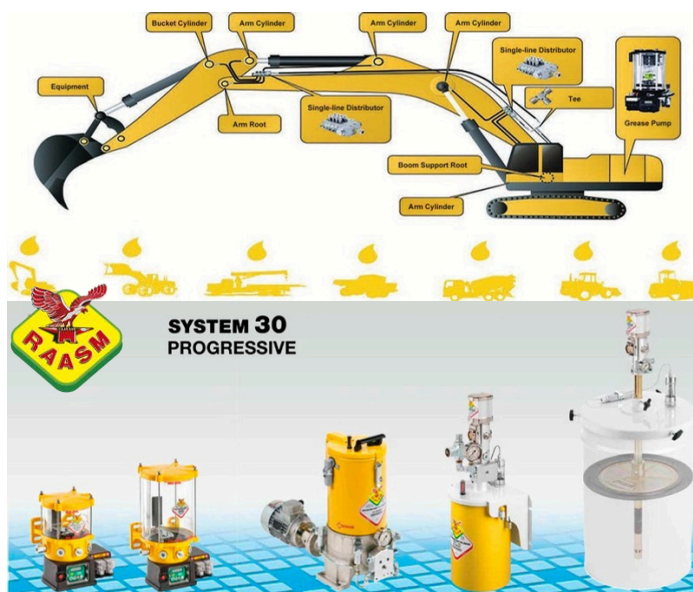


# FUEL AND FLUID TRANSMISSION SYSTEMS

**Flomax** International Products is internationally recognized for its fuel and fluid transfer systems, as well as quick couplings and quick chargers in the global mining industry. In addition to sales, our company also uses these products in lube trucks and lube equipment



# AUTOMATIC LUBRICATION SYSTEM



**RAASM** was established in 1975 by Giovanni Menon, the founder and current CEO, with the objective of manufacturing efficient equipment for the automotive sector. In the 1980s, RAASM commenced the development of fluid management devices

# ALL TYPES OF OF GAS COMPRESSORS

**Airworks** from Canada and **Atlas Copco** from Sweden offer high-quality products that are custom manufactured to meet a variety of purposes and specifications. These include:

- Diesel
- Gasoline
- Hydraulic
- Electric



# ELECTRICITY DISTRIBUTION & LIGHTING TOWER

**GENERAC** | MOBILE



**Generac Mobile®**, previously recognized as Tower Light, was established in 1997 with the objective of developing lighting systems as an accessory to power generators. This system quickly evolved into an independent solution, resulting in the introduction of mobile light towers



# DIESEL, WELDING, GENERATOR, LIGHT TOWER

---

**MOSA** has been providing dependable and high-performance products to the Italian market for over 50 years. Expertise and innovation propel MOSA to produce generators, engine welders, and lighting towers that adhere to global standards in the power generation and welding industries.

**MOSA**



# PORTABLE AIR COMPRESSOR

---

**ROTAIR**



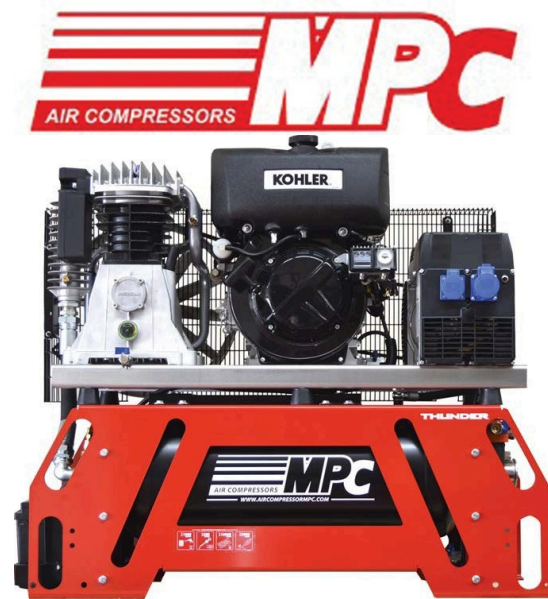
**Rotair specializes** in the design and manufacture of an extensive array of products, including portable compressors, multifunctional dumpers, and hydraulic breakers.



## MORE AIR COMPRESSORS

---

The **MPC** air compressor from Spain is a high-quality, versatile product manufactured to order, accommodating various applications, user-specified requirements, and dimensions.



## MORE AIR COMPRESSORS

---



**CAS** gas compressors are available for a variety of applications and customized specifications. These gas solutions are manufactured in accordance with industry standards and demonstrate exceptional performance quality.

# A COMPREHENSIVE RANGE OF HOLE RESTORATION EQUIPMENT

---

**he Italian Elsa** supercombinata line boring machine tool, a specialized device that adheres to international standards and delivers exceptional performance for all types of hole restoration in mining and road construction machinery, is a global leader in quality. It is certified by UNI EN ISO 9001:2015 and complies with international standards.



**ELSA SUPERCOMBINATA LINE BORING & WELDING MACHINE**



# ALL TYPES OF WHEELBASE AND ADDITIONAL EQUIPMENTS

---





# **EASY GRIPPER & TIRE HANDLER /DENMARK/**

---



**THE MOBILE BOOTSTRAP SOLUTION  
COMBINING MOBILE AND DESKTOP  
TECHNOLOGIES BENEFITS.**

---



# MOBILE CRUSHER PROPULSION

Our company provides an extensive selection of Chinese **Mesda** brand mobile jaw crushers, impact crushers, cone crushers, and screening equipment for the processing of mineral raw materials and the recycling of construction materials.



# ALL TIRES FOR HEAVY-DUTY / OTR TBR /





# FUEL AND OIL SERVICE TRUCKS

Since its inception, Cosmic Rays Engineering has delivered comprehensive lubrication service solutions, alongside the assembly and manufacturing of lube trucks. We possess extensive experience in outfitting vehicles such as the Cat 725, Shacman, Kamaz 53125, Toyota Dyna, and Land Cruiser 76, as well as integrating lube modules into fuel and lubrication service vehicles that adhere to international standards. Our products have been supplied to prominent mining operations, including Oyu Tolgoi, Tavan Tolgoi, Boroo Gold, Zaamar, and Erdenes Tavan Tolgoi, in response to customer requests.



# OUR PARTNER COMPANIES





# COSMIC RAYS **ENGINEERING**

## THANK YOU!



<https://cosmicrays.mn/>